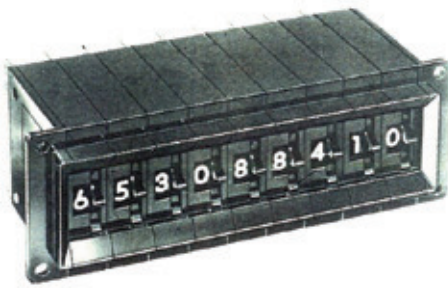
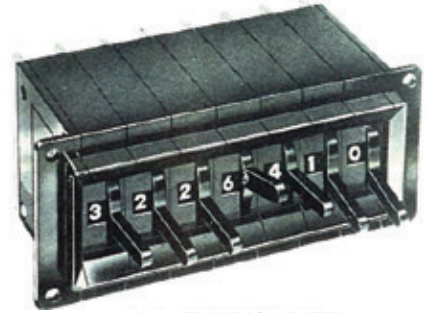


INDUSTRIAL SIZE THUMBWHEELS/LEVERWHEELS SERIES T10 & L10 BACK MOUNT

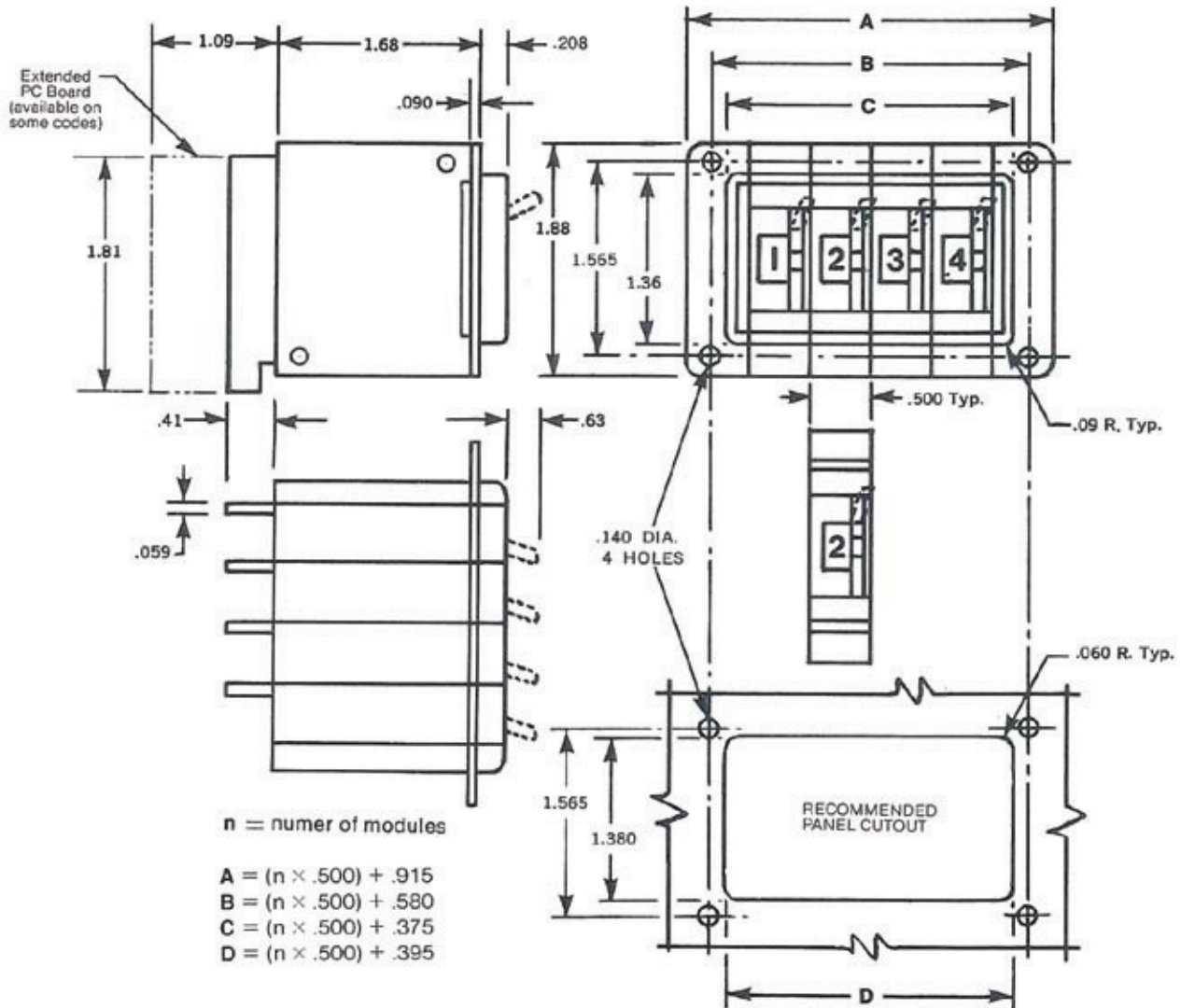


T10 THUMBWHEEL

T10 Thumbwheel available in 8, 10, 12 and 16 positions. L10 Leverwheel available in 8 and 10 positions. Both offered in a wide variety of output codes. T10 Thumbwheel can be furnished with extended PC board to provide mounting of other components. (See Page 5.) Stops may be inserted at factory to control dial rotation. (See Page 7.)



L10 THUMBWHEEL



For assemblies of more than 10 modules, contact factory. (See page 6.)



WIDE WINDOW FUNCTION SWITCH

A double-width Series T10 Thumbwheel switch providing three times the normal legend area. Combines two standard width units having special readout window. Offered in a wide variety of standard and non-standard legends. May be used as a single unit or ganged together with any number of Series T10 modules. Contact factory for details.

Endcaps & Spacers for T10 and L10

Finish	Left Endcap	Right Endcap	.500" Spacer	.250" Spacer
Black Gloss	009-0498	009-0499	009-0832	009-0587
Black Matte	009-0705	009-0706	009-0726	009-0727

Remove excess solder flux with 40% isopropyl alcohol in distilled water. Other de-fluxing agents may damage switch housings. If you cannot use isopropyl alcohol, contact factory.